

**KIF5B Antibody**  
**Rabbit mAb**  
**Catalog # AP92934****Specification**

---

**KIF5B Antibody - Product Information**

Application	WB, IHC, ICC, IP
Primary Accession	<a href="#">P33176</a>
Reactivity	Rat
Clonality	Monoclonal
<b>Other Names</b>	
KIF5B; Kinesin1; KINH; KNS; KNS1; UKHC;	
Isotype	Rabbit IgG
Host	Rabbit
Calculated MW	109685 Da

**KIF5B Antibody - Additional Information**

Dilution	WB~~1:1000 IHC~~1:100~500 ICC~~N/A IP~~N/A
Purification	Affinity-chromatography
Immunogen	A synthesized peptide derived from human KIF5B
Description	Microtubule-dependent motor required for normal distribution of mitochondria and lysosomes.
Storage Condition and Buffer	Rabbit IgG in phosphate buffered saline , pH 7.4, 150mM NaCl, 0.02% sodium azide and 50% glycerol. Store at +4°C short term. Store at -20°C long term. Avoid freeze / thaw cycle.

**KIF5B Antibody - Protein Information****Name** KIF5B ([HGNC:6324](#))**Synonyms** KNS, KNS1**Function**

Microtubule-dependent motor required for normal distribution of mitochondria and lysosomes. Can induce formation of neurite-like membrane protrusions in non-neuronal cells in a ZFYVE27-dependent manner (By similarity). Regulates centrosome and nuclear positioning during mitotic entry. During the G2 phase of the cell cycle in a BICD2- dependent manner, antagonizes dynein function and drives the separation of nuclei and centrosomes (PubMed:<a href="http://www.uniprot.org/citations/20386726" target="\_blank">20386726</a>). Required for anterograde axonal transportation of MAPK8IP3/JIP3 which is essential for MAPK8IP3/JIP3 function

in axon elongation (By similarity). Through binding with PLEKHM2 and ARL8B, directs lysosome movement toward microtubule plus ends (Probable). Involved in NK cell-mediated cytotoxicity. Drives the polarization of cytolytic granules and microtubule-organizing centers (MTOCs) toward the immune synapse between effector NK lymphocytes and target cells (PubMed:<a href="http://www.uniprot.org/citations/24088571" target="\_blank">24088571</a>).

#### Cellular Location

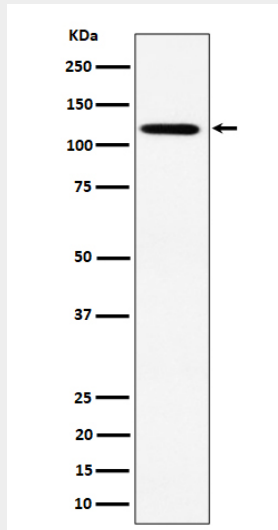
Cytoplasm, cytoskeleton {ECO:0000250|UniProtKB:Q2PQA9}. Cytolytic granule membrane. Lysosome membrane; Peripheral membrane protein; Cytoplasmic side Note=Uniformly distributed between soma and neurites in hippocampal neurons. {ECO:0000250|UniProtKB:Q2PQA9}

#### KIF5B Antibody - Protocols

Provided below are standard protocols that you may find useful for product applications.

- [Western Blot](#)
- [Blocking Peptides](#)
- [Dot Blot](#)
- [Immunohistochemistry](#)
- [Immunofluorescence](#)
- [Immunoprecipitation](#)
- [Flow Cytometry](#)
- [Cell Culture](#)

#### KIF5B Antibody - Images



Western blot analysis of KIF5B expression in HeLa cell lysate.